

BR-48/BR-60

Parts and Operator's Manual

Bag Wrapper

Dealer/Customer Information

dealer

Owner

Address

address

city

city

state/province

state/province

zip/postal code

zip/postal code

country

country

Bale Wrapper

Machine Model Number _____

Machine Serial Number _____

Table of Contents

| | |
|-----------------------------------|----------|
| Safety Messages | 3 |
| Safety Symbol Explanations | 3 |
| Operation | |
| Tractor Requirements | 6 |
| Setup | 6 |
| Bag Routing | 7 |
| Twine Tie | 8 |
| Transport | 8 |
| Storage | 8 |
| Maintenance | 9 |
| Troubleshooting | 9 |
| Parts and Components | 9 |
| Main Frame/Legs | 10 |
| Three Point Hitch | 12 |
| Twine Arm Components | 14 |
| Slide Components | 16 |
| Bag Guide | 18 |
| Trolley Spindle BR 60 | 20 |
| Trolley Spindle BR 48 | 22 |
| Hydraulic Hoses | 24 |
| Spring Plate Components | 26 |
| Drive Chain | 28 |

Safety Messages

General safety messages appear in this section. Refer to the appropriate section where a potential hazard may occur if operating procedures are not followed.

A signal word “**DANGER,**” or “**WARNING,**” is used with the safety alert symbol.



Safety Symbol Explanation



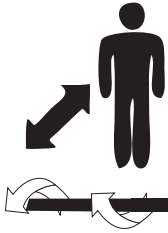
Caution symbol is used to alert you to the potential for bodily injury, this symbol is used in conjunction with other symbols.



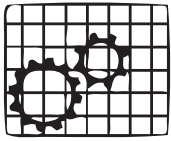
Keep clear while in operation, body entanglement may occur.



Keep clear while in operation, body entanglement may occur.



Keep a safe distance from rotating parts.



Keep all shields in place when operating.

*****WARNING*****

Check machine before operating. Machine must be in good operating condition and all safety equipment installed and functioning properly.

*****WARNING*****

Shutoff tractor before servicing, cleaning, repairing, or transporting machine.

*****WARNING*****

Pressurized fluid can penetrate body tissue and result in serious injury or death. Leaks can be invisible. *Keep away* from suspected leak. Relieve pressure in the hydraulic system before searching for leaks, disconnecting hoses, or performing any other work on the system. When loosening a fitting where some residual pressure may exist, slowly loosen the fitting until oil begins to leak. Wait for leaking to stop before disconnecting the fitting. Fluid injected under the skin must be removed immediately by a surgeon familiar with this type of injury.

*****WARNING*****

Operate from tractor **ONLY**.

Failure to follow any of the preceding safety instructions, or those that follow within this manual, could result in serious injury or death. This machine is to be used only for those purposes for which it was intended, as explained in this manual.

Operation

Tractor Requirements: Dual hydraulics, Cat. 2, 3 point hook-up, 8gpm/1800psi.

Setup:

**Setup of this machine requires a minimum of 2 people.

Connect the equipment to the tractor

Hook up 3-point

remove pins

raise legs

replace the pins

hook up (4) hydraulic hoses

After connecting the unit to the tractor (see fig 1)

pull pins

slide cylinder out

re-install pins

apply a liberal amount of grease to ALL 4 sides of the spindle

retract spindle 12"

**CAUTION: SHUT OFF TRACTOR BEFORE
SERVICING EQUIPMENT!**

- Always grease the spindle before operating.
- Use multipurpose lithium gun grease for best results.
- Apply grease liberally to the spindle with a grease gun.
- Make sure spindle is completely covered.
- Re-apply grease to spindle as needed during use or after every 6 bags.

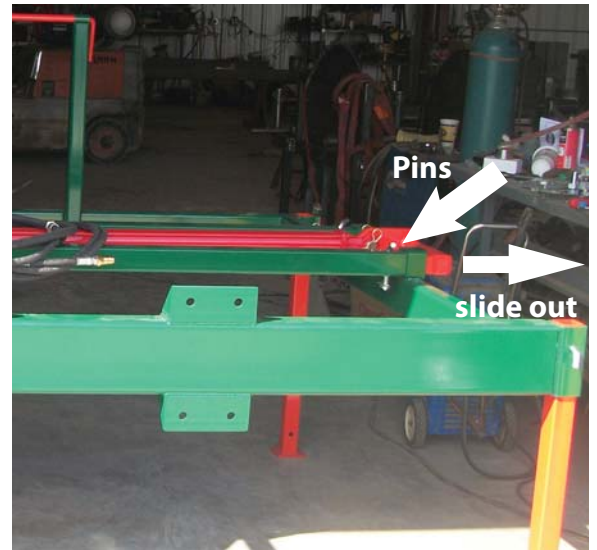


Figure 1

Bag Routing:

To ensure a proper start of the roll, thread the end of the bag over the 1st bar and under the 2nd bar (see Figure 2). Hold bag over spindle hole on the right side, extend spindle slowly while anchoring the end of the bag with the spindle.



KEEP HANDS AND LOOSE CLOTHING AWAY FROM SPINDLE!

Spindle will turn clockwise, bag is now ready to be rolled.

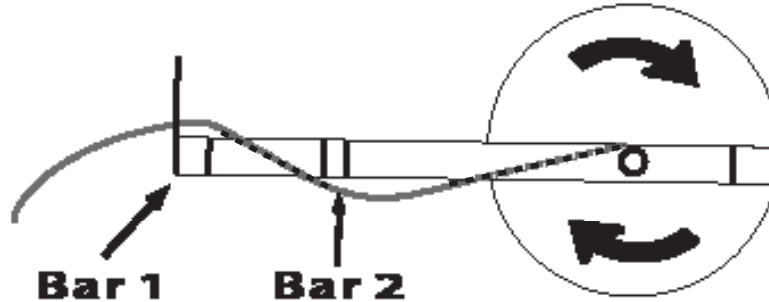


Figure 2

Twine tie

- *For best results use plastic bale twine.*
- When bag reaches the desired size, twine is wrapped around it to keep it's shape.
- Stop unit while completed bale is still on the spindle.
- Tie twine to the end of the bag (if the end of the bag is not easily accessible, the twine can be tied through the bag).
- Start turning the spindle **slowly (at a pace that can be easily managed)**.
- Start the twine in the center of the bale, using the twine guide rod. Move twine slowly to the right and continue twine back to the left - *twine should be moved slowly enough to achieve one full turn every 2"*.
- Slowly move the twine again to the center of the bale.
- **STOP UNIT**
- **Cut twine and tie off on bale.**
- **Tie the twine around the twine insulator when tying is complete.**
- **Retract spindle, bale will drop out of unit.**

Transport

- Extend the spindle and pull pins out of cylinder yoke
- Retract the spindle and re-install the pins

Unit is now ready for transport

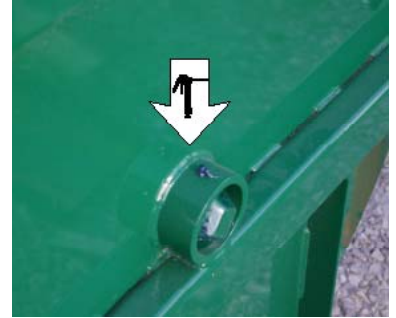
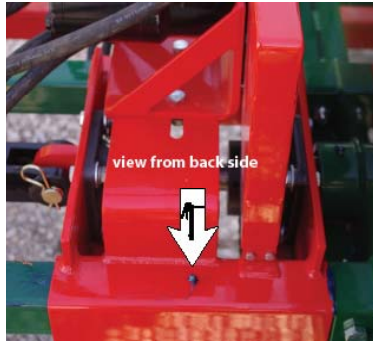
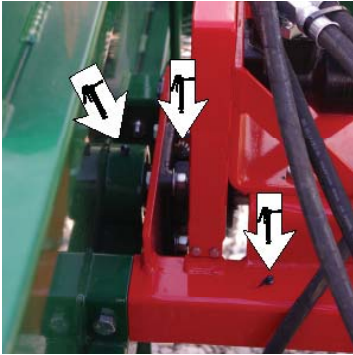
Storage

If unit is not in use, extend the legs and pull pin located on the leg. Extend leg and re-install the pin. Repeat this procedure for each leg.

Maintenance

CAUTION: SHUT OFF TRACTOR BEFORE SERVICING EQUIPMENT!

- Always grease the spindle before operating.
- Use multipurpose lithium gun grease for best results.
- Apply grease liberally to the spindle with a grease gun.
- Make sure spindle is completely covered.
- Re-apply grease to spindle as needed during use or after every 6 bags.



Troubleshooting

- If wrapper stalls - back-up tractor
- Lower 3pt to lesson drag on bag

Parts and Components

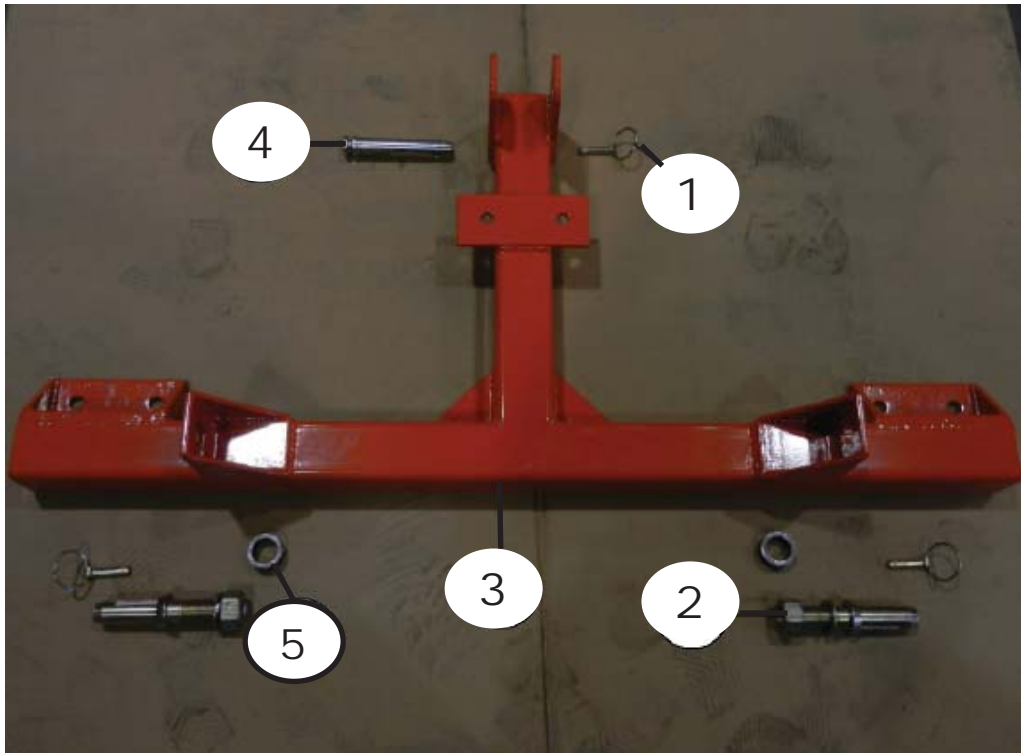
BR-48 & BR-60 Main Frame/Legs



Main Frame/Legs

| ITEM # | PART # | QTY. | MODEL# | DESCRIPTION |
|--------|---------|------|---------|-------------------------|
| 1 | BR00001 | 1 | BR - 48 | MAIN FRAME (48" DISC) |
| | BR00002 | 1 | BR - 60 | 60" DISC |
| 2 | BR00003 | 2 | BR - 48 | BACK LEGS (23 3/4") |
| | BR00004 | 2 | BR - 60 | 33" |
| 3 | BR00005 | 2 | BR - 48 | FRONT LEGS (25 3/4") |
| | BR00006 | 2 | BR - 60 | 35" |

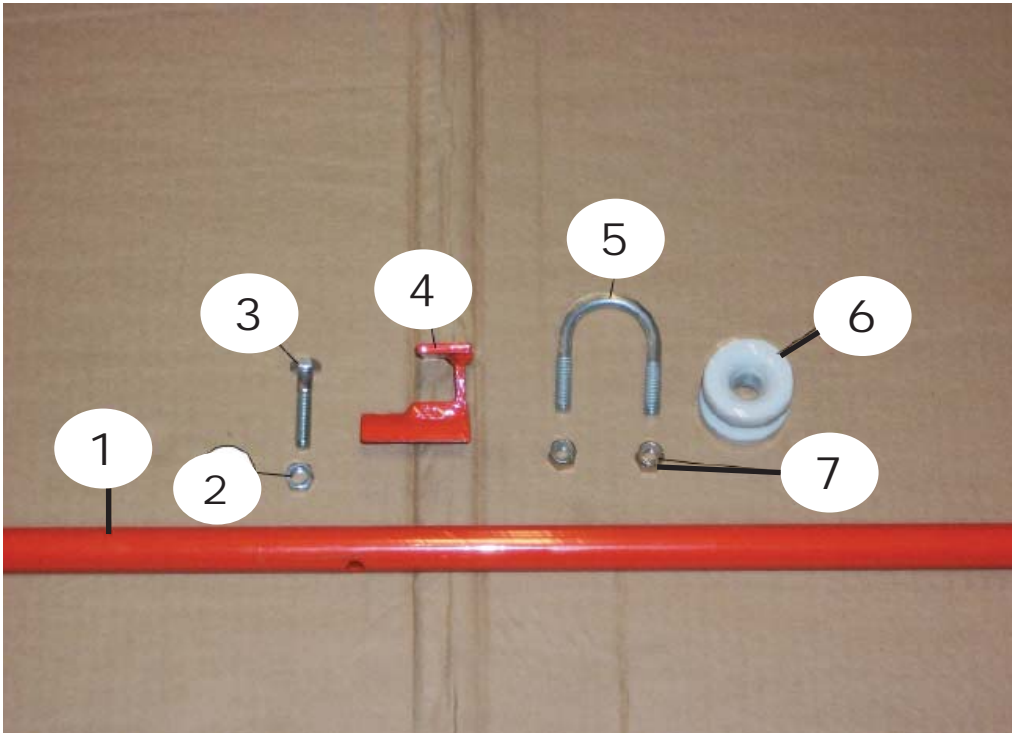
BR-48 & BR-60 Three Point Hitch



Three Point Hitch

| ITEM # | PART # | QTY. | MODEL# | DESCRIPTION |
|---------------|---------------|-------------|---------------|------------------------|
| 1 | DKLP200 | 3 | ALL MODELS | LYNCH PIN |
| 2 | BRP7212 | 2 | ALL MODELS | CAT. 2 LIFT PIN |
| 3 | BR00044 | 1 | ALL MODELS | THREE POINT MAIN FRAME |
| 4 | BRP2450 | 1 | ALL MODELS | CAT. 2 TOP LINK PIN |
| 5 | BR00045 | 2 | ALL MODELS | LIFT PIN SPACER |

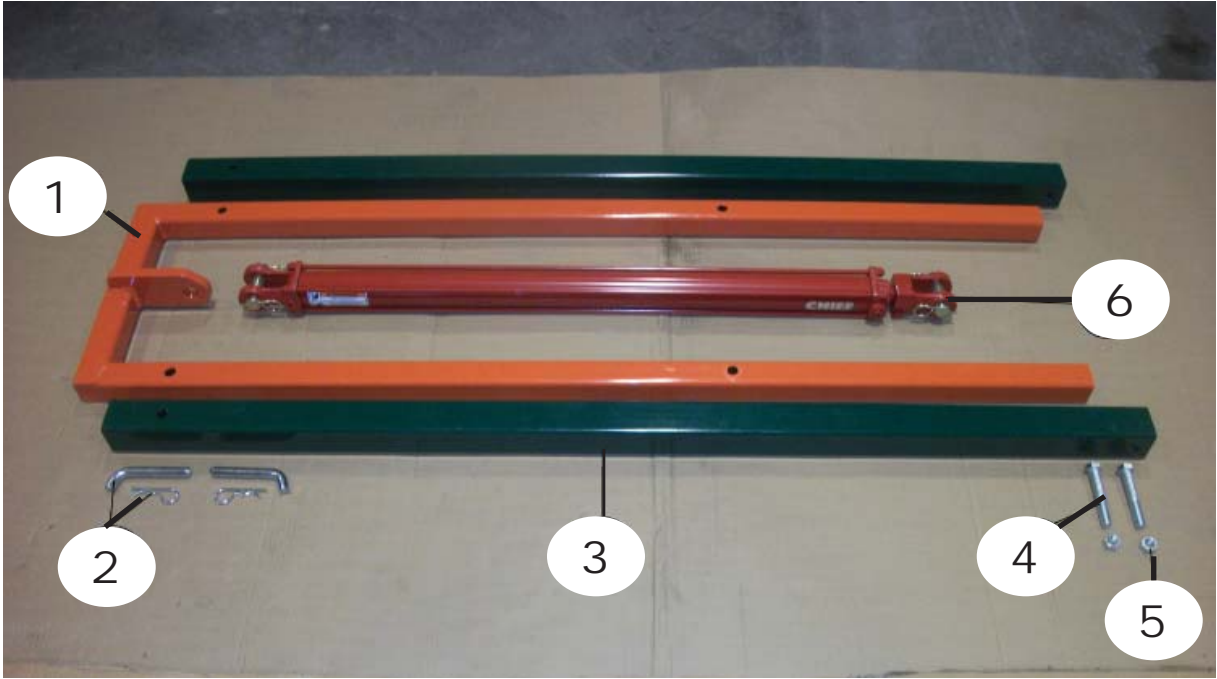
BR-48 & BR-60 Twine Arm Components



Twine Arm Components

| ITEM # | PART # | QTY. | MODEL# | DESCRIPTION |
|--------|------------|------|------------|--|
| 1 | BR00038 | 1 | ALL MODELS | TWINE ARM |
| 2 | BR00039 | 1 | ALL MODELS | 5/16" LOCK NUT |
| 3 | BR00040 | 1 | ALL MODELS | 5/16" x 1 1/4" GRD. 5 BOLT |
| 4 | BR00041 | 1 | ALL MODELS | INSULATOR MOUNT |
| 5 | BR3043T24 | 2 | ALL MODELS | 5/16" x 1 3/8" x 2 3/16" U-BOLT |
| 6 | BR90196001 | 2 | ALL MODELS | INSULATOR |
| 7 | BR00042 | 4 | ALL MODELS | 5/16" NYLOCK NUT |
| 8 | BR00043 | 2 | ALL MODELS | INSULATOR KIT (INCLUDES ITEM 5, 6, 7) |

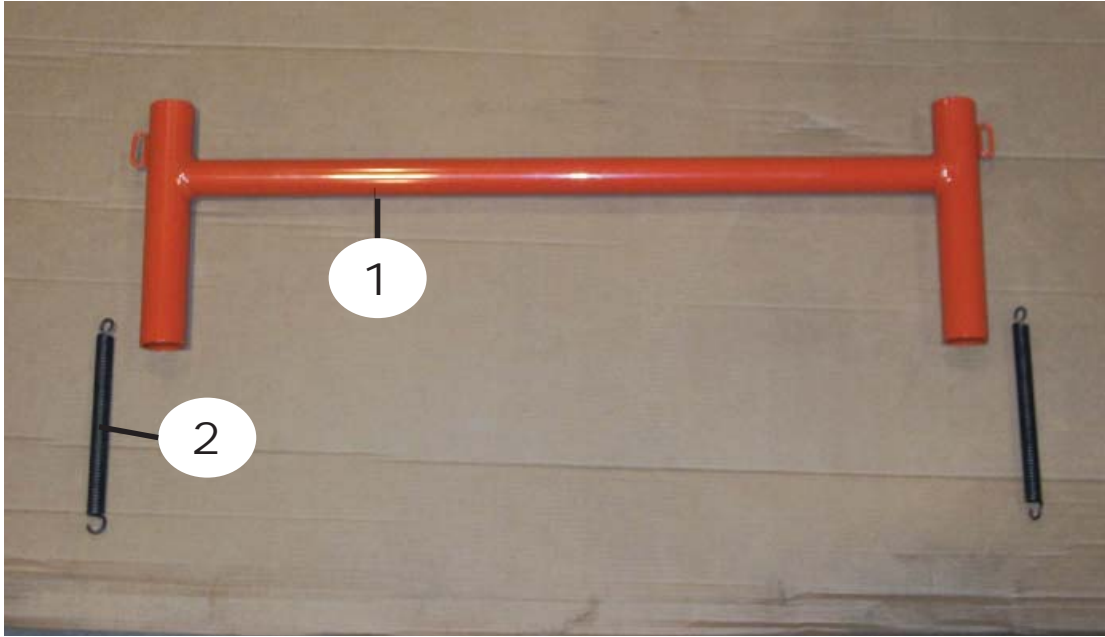
BR-48 & BR-60 Slide Components



Slide Components

| ITEM # | PART # | QTY. | MODEL# | DESCRIPTION |
|--------|----------|------|------------|-------------------------------------|
| 1 | BR00034 | 1 | ALL MODELS | SLIDE CYLINDER MOUNT |
| 2 | HP6253WC | 6 | ALL MODELS | PIN W/ CLIP (USED ON LEGS TOO) |
| 3 | BR00035 | 2 | ALL MODELS | SLIDE & TROLLEY GUIDE TUBES |
| 4 | BR00036 | 2 | ALL MODELS | 5/8" x 4" GRD. 5 BOLT |
| 5 | BR00037 | 2 | ALL MODELS | 5/8" LOCK NUT |
| 6 | BR211163 | 1 | ALL MODELS | 2"-CYLINDER |
| | BR218875 | 1 | ALL MODELS | 3"-CYLINDER |
| 7 | BR203001 | 1 | ALL MODELS | 2"-CYLINDER PACKING KIT |
| | BR218820 | 1 | ALL MODELS | 3"-CYLINDER PACKING KIT |

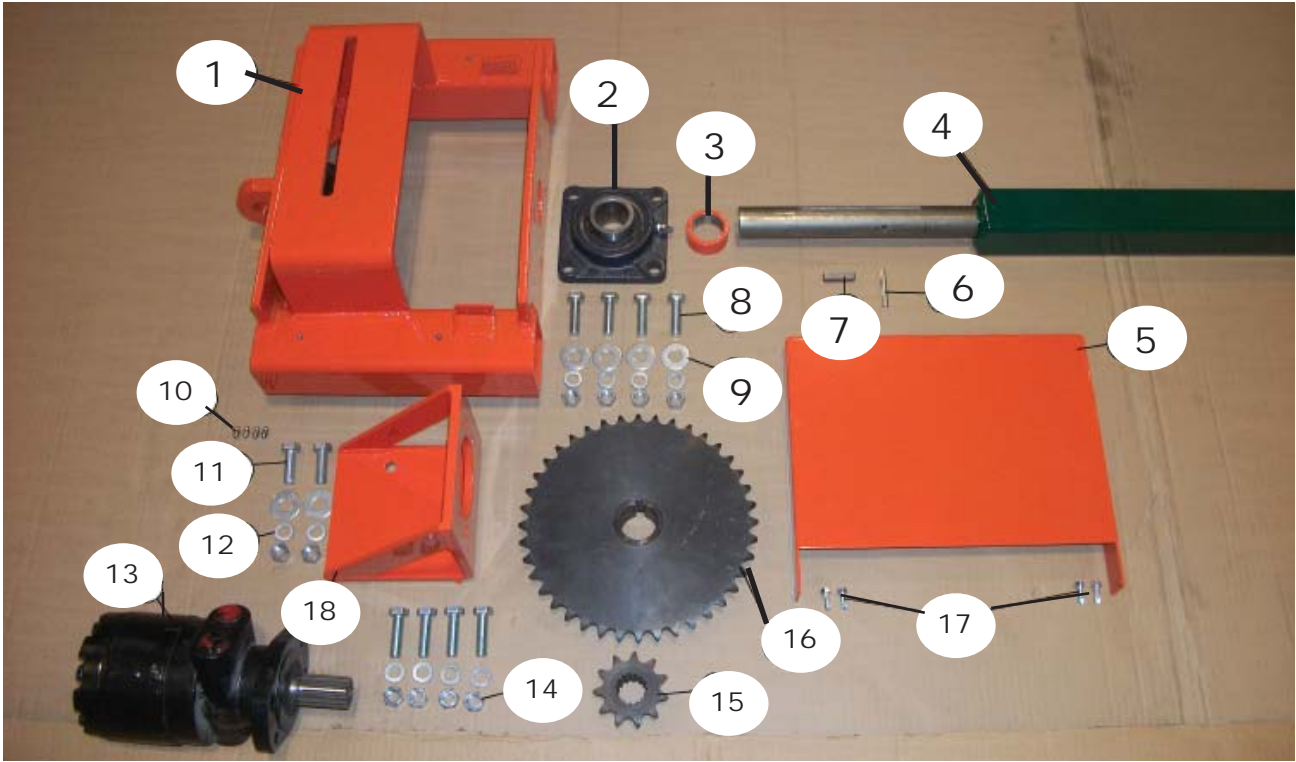
BR-48 & BR-60 Bag Guide



Bag Guide

| ITEM # | PART # | QTY. | MODEL# | DESCRIPTION |
|---------------|---------------|-------------|---------------|---------------------|
| 1 | BR00046 | 1 | All Models | BAG GUIDE FRAMEWORK |
| 2 | BR1789061 | 2 | All Models | TENSION SPRING |

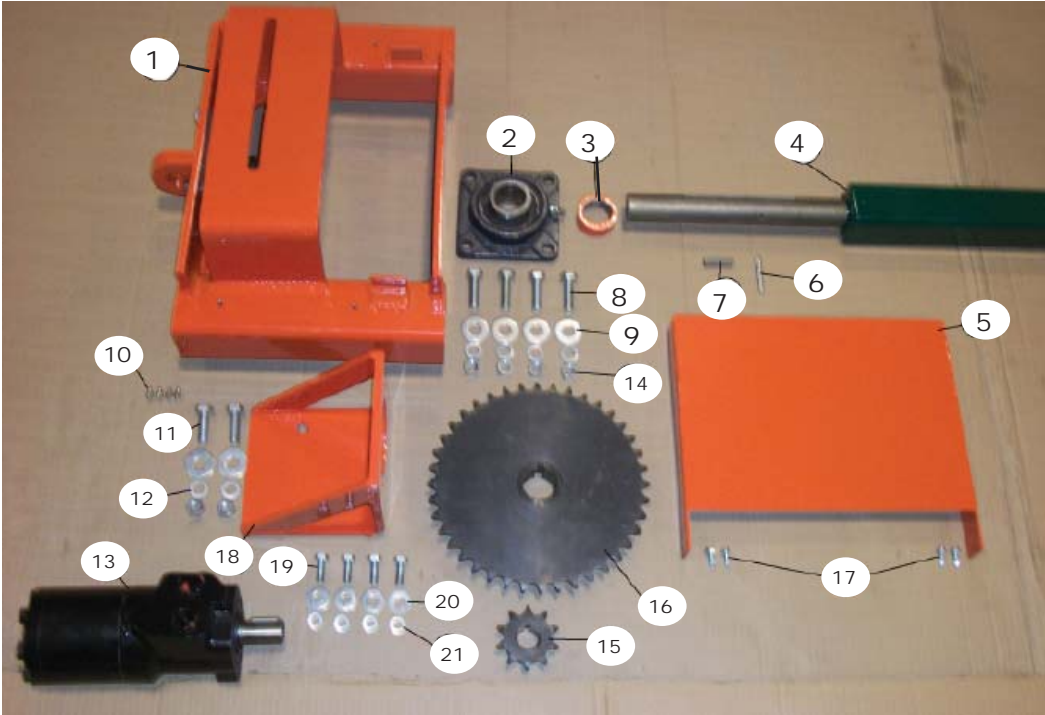
BR-60 Trolley Spindle Components



Trolley Spindle (BR-60)

| ITEM # | PART # | QTY. | MODEL# | DESCRIPTION |
|--------|-----------|------|------------|---|
| 1 | BR00007 | 1 | ALL MODELS | TROLLEY |
| 2 | BR151505 | 2 | ALL MODELS | 1 1/2" ID BEARING WITH HOUSING |
| 3 | BR00008 | 1 | ALL MODELS | 1 1/2" x 2" x 7/8" BEARING SPACER |
| 4 | BR00009 | 1 | ALL MODELS | SPINDLE |
| 5 | BR00011 | 1 | BR - 60 | CHAIN SAFETY SHEILD |
| 6 | BR0165973 | 1 | ALL MODELS | 1/4" x 2" ROLL PIN |
| 7 | BR00047 | 1 | ALL MODELS | 3/8" x 3/8" x 1 1/2" KEY STOCK |
| 8 | BR00026 | 12 | BR - 60 | 1/2" x 1 3/4" GRD. 5 BOLT |
| 9 | BR00027 | 10 | BR - 60 | 1/2" FLAT WASHER |
| 10 | BR598001 | 6 | ALL MODELS | 1/4"/28 SHORT GREASE ZERK (USED ON DISC PIPES TOO) |
| 11 | BR00028 | 2 | ALL MODELS | 1/2" x 1 1/2" GRD. 5 BOLT |
| 12 | BR00029 | 14 | BR - 60 | 1/2" LOCK WASHER |
| 13 | BR500540 | 1 | BR - 60 | HYDRAULIC MOTOR |
| 14 | BR00030 | 14 | BR - 60 | 1/2" COARSE THREAD HEX NUT |
| 15 | BR60B10F | 1 | BR - 60 | RC-60 11 TOOTH 1 1/4" SPLINE SPROCKET |
| 16 | BR60B40F | 1 | ALL MODELS | RC-60 40 TOOTH 1 1/2" BORE SPROCKET |
| 17 | BR1/4x1 | 4 | ALL MODELS | 1/4" x 1" SELF DRILLING SCREWS |
| 18 | BR00013 | 1 | BR - 60 | HYDRAULIC MOTOR MOUNT |

BR-48 Trolley Spindle Components



Trolley Spindle (BR-48)

| ITEM # | PART # | QTY. | MODEL# | DESCRIPTION |
|--------|-----------|------|------------|---|
| 1 | BR00007 | 1 | ALL MODELS | TROLLEY |
| 2 | BR151505 | 2 | ALL MODELS | 1 1/2" ID BEARING WITH HOUSING |
| 3 | BR00008 | 1 | ALL MODELS | 1 1/2" x 2" x 7/8" BEARING SPACER |
| 4 | BR00009 | 1 | ALL MODELS | SPINDLE |
| 5 | BR00010 | 1 | BR - 48 | CHAIN SAFETY SHIELD |
| 6 | BR0165973 | 1 | ALL MODELS | 1/4" x 2" ROLL PIN |
| 7 | BR00047 | 1 | ALL MODELS | 3/8" x 3/8" x 1 1/2" KEY STOCK |
| 8 | BR00026 | 8 | BR - 48 | 1/2" x 1 3/4" GRD. 5 BOLT |
| 9 | BR00027 | 10 | BR - 48 | 1/2" FLAT WASHER |
| 10 | BR598001 | 6 | ALL MODELS | 1/4"/28 SHORT GREASE ZERK (USED ON DISC PIPES TOO) |
| 11 | BR00028 | 2 | ALL MODELS | 1/2" x 1 1/2" GRD. 5 BOLT |
| 12 | BR00029 | 10 | BR - 48 | 1/2" LOCK WASHER |
| 13 | BR255400 | 1 | BR - 48 | HYDRAULIC MOTOR |
| 14 | BR00030 | 10 | BR - 48 | 1/2" COARSE THREAD HEX NUT |
| 15 | BR60B10F | 1 | BR - 48 | RC-60 10 TOOTH 1" BORE SPROCKET |
| 16 | BR60B40F | 1 | ALL MODELS | RC-60 40 TOOTH 1 1/2" BORE SPROCKET |
| 17 | BR1/4x1 | 4 | ALL MODELS | 1/4" x 1" SELF DRILLING SCREWS |
| 18 | BR00012 | 1 | BR - 48 | HYDRAULIC MOTOR MOUNT |
| 19 | BR00031 | 4 | BR - 48 | 3/8" x 1 1/4" GRD 5 BOLT |
| 20 | BR00032 | 4 | BR - 48 | 3/8" FLAT WASHER |
| 21 | BR00033 | 4 | BR - 48 | 3/8" LOCK WASHER |

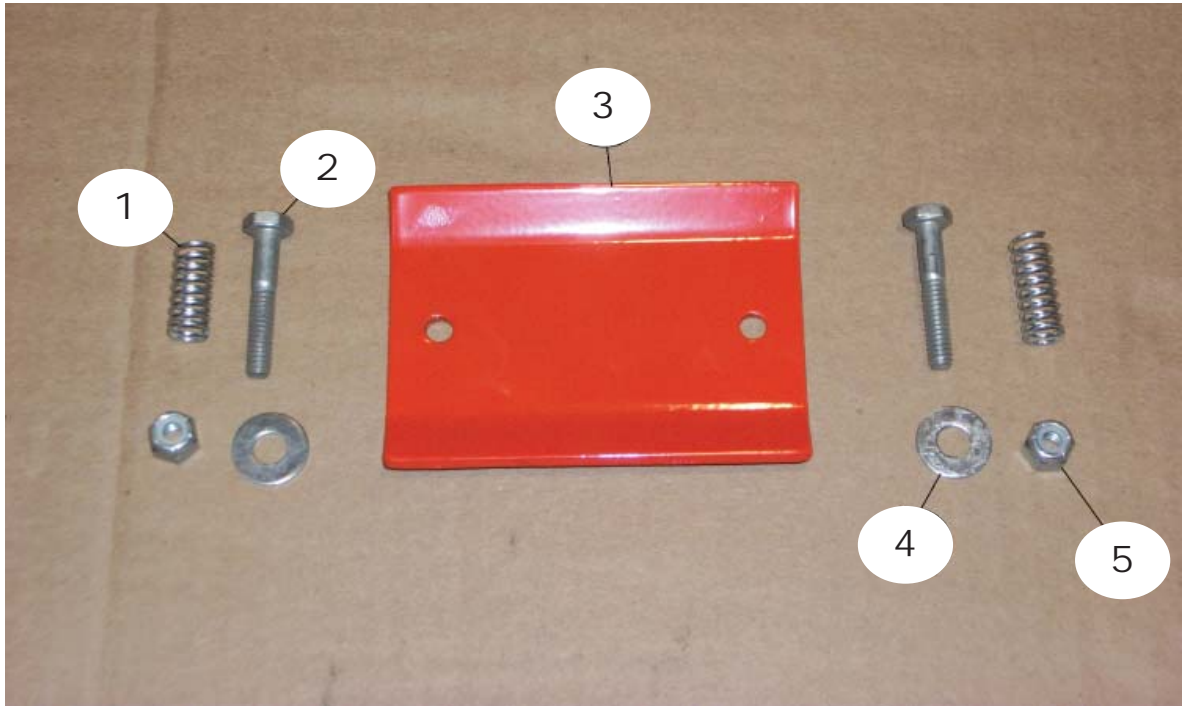
BR-48 & BR-60 Hydraulic Hoses



Hydraulic Hoses

| ITEM # | PART # | QTY. | MODEL# | DESCRIPTION |
|--------|-----------|------|--------------|--|
| 1 | BR00015-2 | 1 | 2"- CYLINDER | 3/8" x 11' HYDRAULIC HOSE W/ ENDS (06U - 106 & 06U - P08) |
| | BR0015 | 1 | 3"- CYLINDER | 3/8" x 8'4" HYDRAULIC HOSE W/ ENDS (06U - 108 & 06U - P68) |
| 2 | BR00016-2 | 1 | 2"- CYLINDER | 3/8" x 8'4" HYDRAULIC HOSE W/ ENDS (06U - 106 & 06U - P08) |
| | BR0016 | 1 | 3"- CYLINDER | 3/8" x 8'4" HYDRAULIC HOSE W/ ENDS (06U - 108 & 06U - P68) |
| 3 | BR00017-2 | 2 | 2"- CYLINDER | 1/2" x 6' 4" HYDRAULIC HOSE W/ ENDS (08U - P08 & 08U - R70) |
| | BR00017 | 2 | 3"- CYLINDER | 1/2" x 6' 4" HYDRAULIC HOSE W/ ENDS (08U - 108 & 08U - R70) |
| 4 | BR470019 | 2 | ALL MODELS | 3/8" MALE PIPE x 3/8" FEMALE PIPE SWIVEL STEEL 90 |
| 5 | BR801015 | 4 | 2"- CYLINDER | BALL TYPE PIONEER O-RING ENDS- 3/4" |
| | BR80104 | 4 | 3"- CYLINDER | BALL TYPE PIONEER O-RING ENDS -1/2" |
| 6 | BR00018 | | ALL MODELS | CYLINDER HOSE KIT (INCLUDES |
| 7 | BR00019 | | ALL MODELS | MOTOR HOSE KIT (INCLUDES |

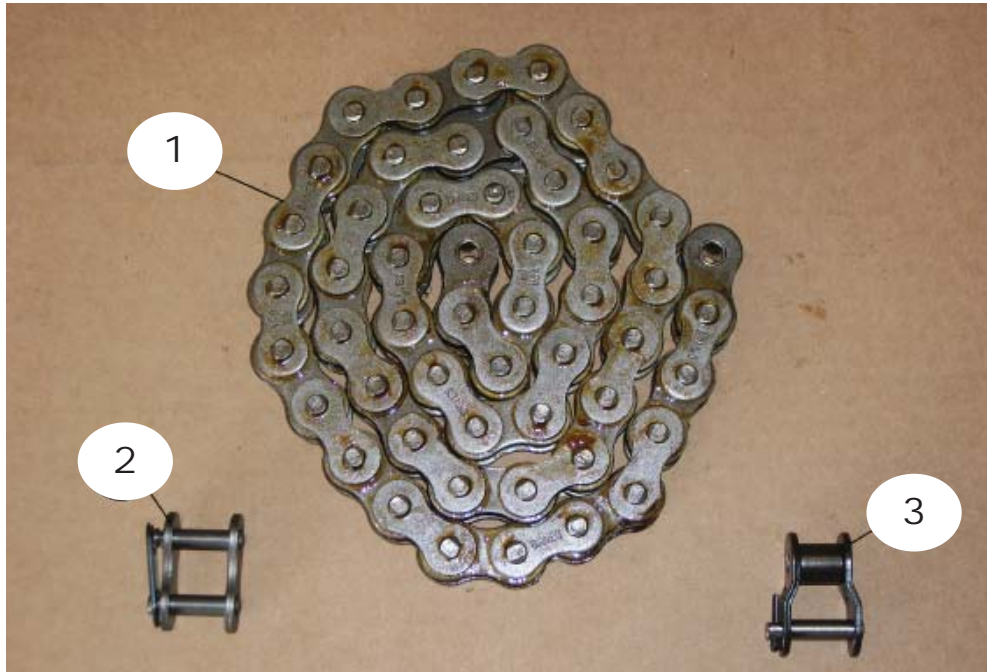
BR-48 & BR-60 Spring Plate Components



Spring Plate Components

| ITEM # | PART # | QTY. | MODEL# | DESCRIPTION |
|--------|-----------|------|--------------|--|
| 1 | BR9657K37 | 2 | ALL MODELS | TENSION SPRING |
| 2 | BR00021 | 2 | ALL MODELS | 1/4" x " GRD. 5 BOLT |
| 3 | BR00022 | 1 | ALL MODELS | TENSION PLATE |
| 4 | BR00023 | 2 | ALL MODELS | 1/4" FLAT WASHER |
| 5 | BR00024 | 2 | ALL MODELS | 1/4" NYLOCK NUT |
| 6 | BR00025 | 1 | ALL MODELS | SPRING PLATE KIT (INCLUDES 1-5) |
| 4 | BR470019 | 2 | ALL MODELS | 3/8" MALE PIPE x 3/8" FEMALE PIPE SWIVEL STEEL 90 |
| 5 | BR801015 | 4 | 2"- CYLINDER | BALL TYPE PIONEER O-RING ENDS- 3/4" |
| | BR80104 | 4 | 3"- CYLINDER | BALL TYPE PIONEER O-RING ENDS -1/2" |
| 6 | BR00018 | | ALL MODELS | CYLINDER HOSE KIT (INCLUDES |
| 7 | BR00019 | | ALL MODELS | MOTOR HOSE KIT (INCLUDES |

BR-48 & BR-60 Drive Chain



Drive Chain

| ITEM # | PART # | QTY. | MODEL# | DESCRIPTION |
|--------|------------|------|------------|---|
| 1 | BR1778800 | 1 | ALL MODELS | #60 ROLLER CHAIN (54 PITCHES OR AS REQUIRED) |
| 2 | BR01773005 | 1 | ALL MODELS | #60 MASTER LINK |
| 3 | BR01770005 | 1 | AS NEEDED | #60 HALF LINK |
| 4 | BR00014 | 1 | ALL MODELS | DRIVE CHAIN KIT (INCLUDES ITEMS 1-3) |